



# GAT MONTHLY MEMBERSHIP PROGRESS REPORT

Results as of: 11/30/2023

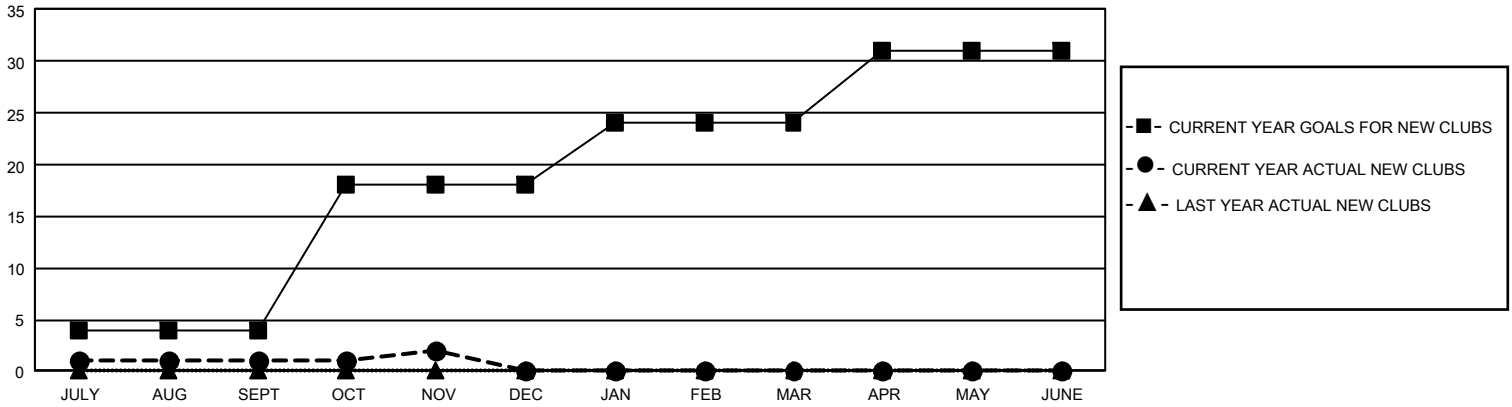
## GMT Constitutional Area 1, Group E

REPORT DOES NOT INCLUDE CLUBS IN UNDISTRICTED AREAS.

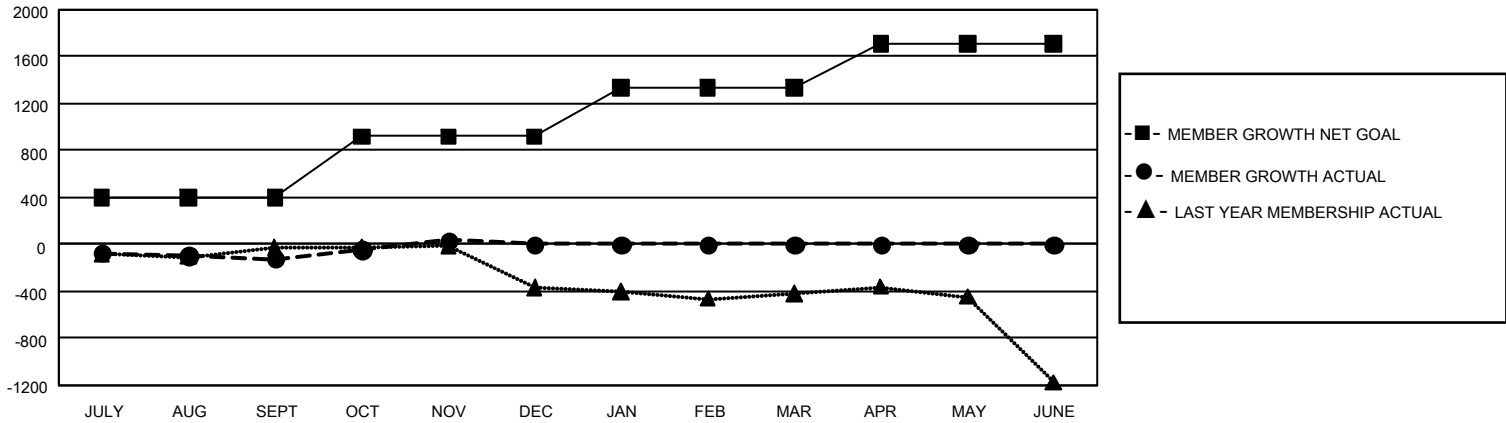
Clubs			
RESULTS FOR 2023-2024			
QUARTER	NEW CLUB GOAL	NEW CLUBS	DROPPED CLUBS
JULY/AUG/SEPT	12	1	8
OCT/NOV/DEC	42	1	4
JAN/FEB/MAR	18	0	0
APR/MAY/JUNE	21	0	0

Members			
RESULTS FOR 2023-2024			
QUARTER	MEMBER GROWTH NET GOAL	MEMBER GROWTH ACTUAL	DROPPED MEMBERS ACTUAL (including transfers)
JULY/AUG/SEPT	398	977	1,023
OCT/NOV/DEC	521	652	451
JAN/FEB/MAR	414	0	0
APR/MAY/JUNE	379	0	0

GOALS AND ACTUAL NEW CLUBS CUMULATIVE



GOALS AND ACTUAL MEMBERS CUMULATIVE



<b>DROPPED CLUBS: 12</b>	512 CLUBS OF 1,318 ADDED 1 OR MORE NEW MEMBERS	<b><u>GENDER DISTRIBUTION</u></b>	
		MALE 23,405 (67.50%) FEMALE 11,247 (32.44%) NON BINARY 1 (0.00%) PREFER NOT TO ANSWER 21 (0.06%)	
<b><u>DROPPED MEMBERS</u></b>		<a href="#">CLICK HERE FOR CUMULATIVE MEMBERSHIP DATA</a>	TOTAL FAMILY UNIT MEMBERS 6,573
DECEASED 237 CLUB CANCELLED 14 OTHER 1,223 <b>TOTAL 1,474</b>	FAMILY MEMBERS PAYING HALF DUES 3,373		